

# Designing Australian Schools: School Plans By State 1950-1980

Victoria & ACT	2
Western Australia	3
Queensland	4
South Australia	5
New South Wales	6
<i>image source credits</i>	7



# School Plans: VICTORIA & ACT

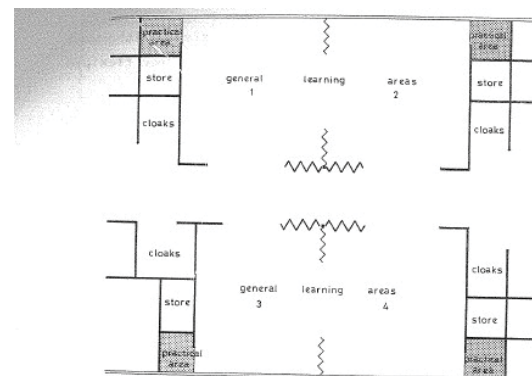
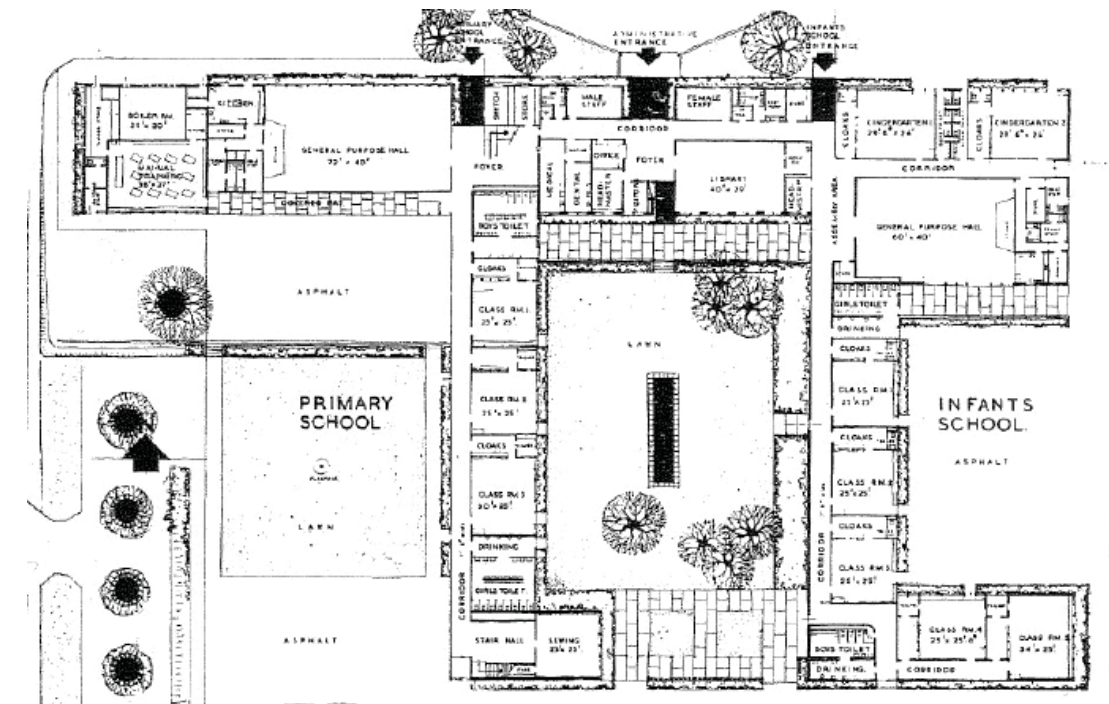
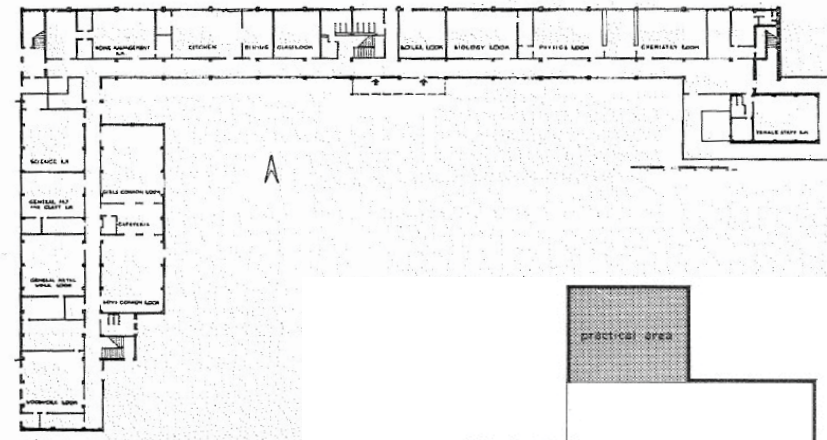
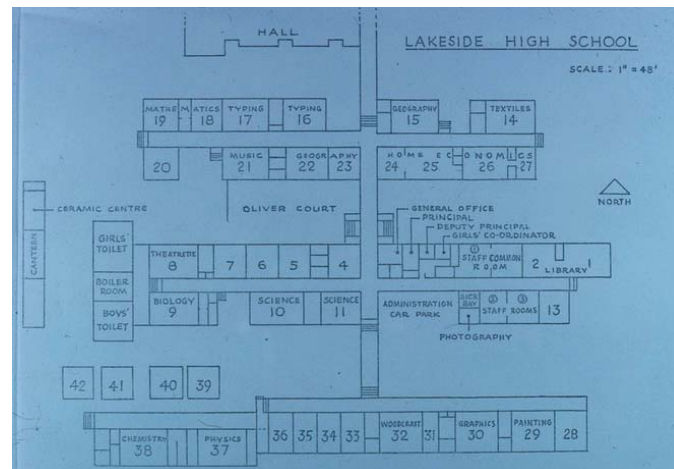
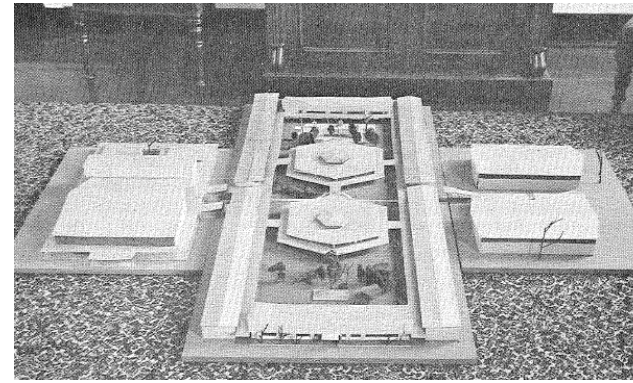
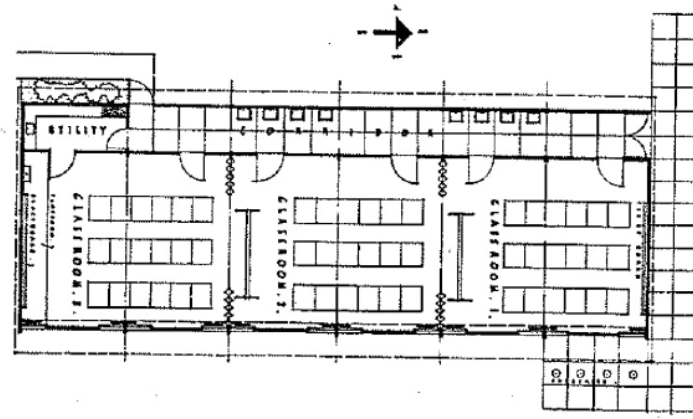


FIGURE 20: FOUR-TEACHER UNIT: NORTH FITZROY SCHOOL, VICTORIA (1972)

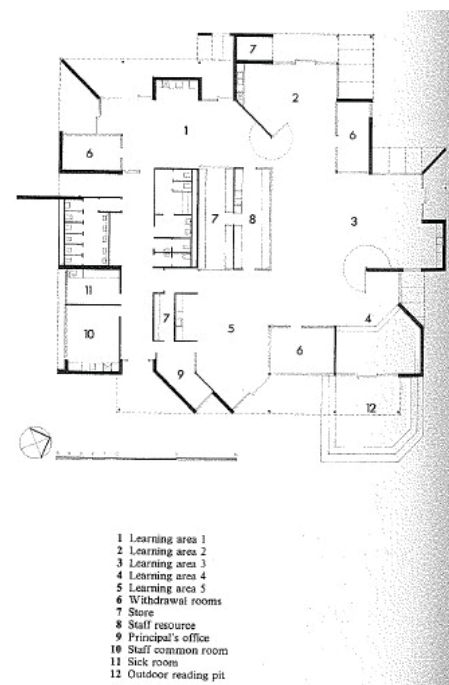
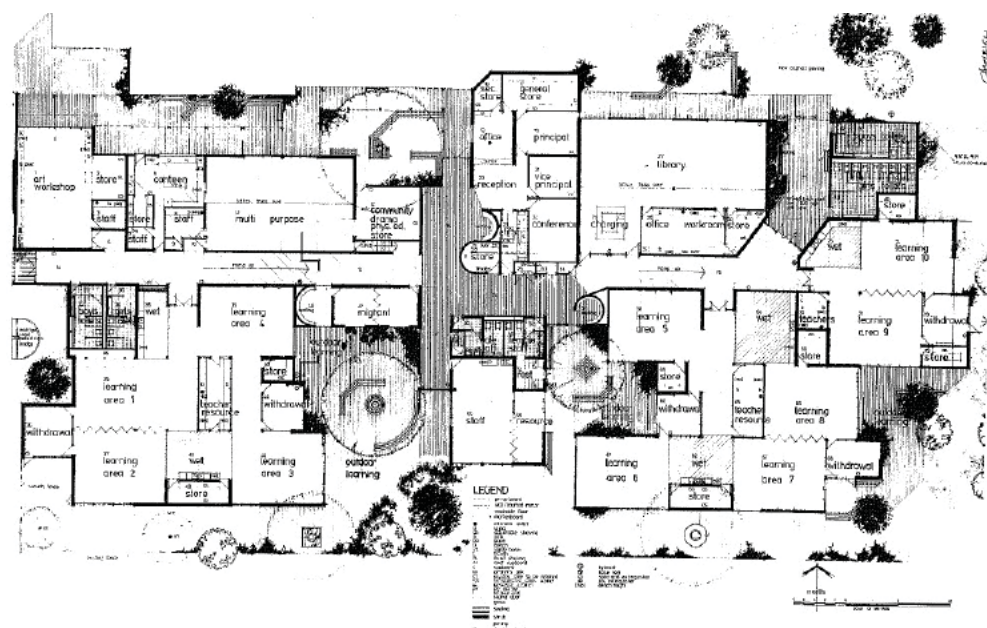
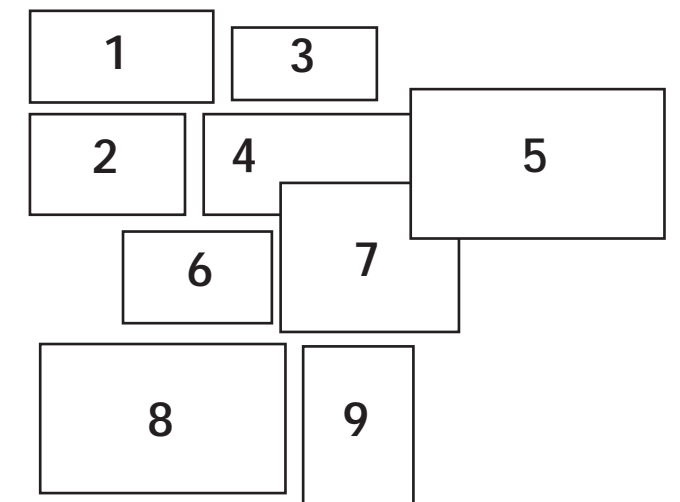


FIGURE 19: FOUR-TEACHER UNIT, WEETANGERA PRIMARY SCHOOL, AUSTRALIAN CAPITAL TERRITORY (1973)



- 1 - St Josephs School (Springvale), 1954
  - 2 - Lakeside High School, 1961-62
  - 3 - Courtyard High School, 1967
  - 4 - Kew High School, 1965
  - 3 - Downer Primary School (ACT), 1964
  - 6 - Four -Teacher Unit, North Fitzroy School, 1972
  - 7 - Four-Teacher Unit, Weetangera Primary School (ACT), 1976
  - 8 - Queenscliff High School, 1980
  - 9 - Queenscliff High School, 1980
- (refer page 7 for image credits)



# School Plans: WESTERN AUSTRALIA

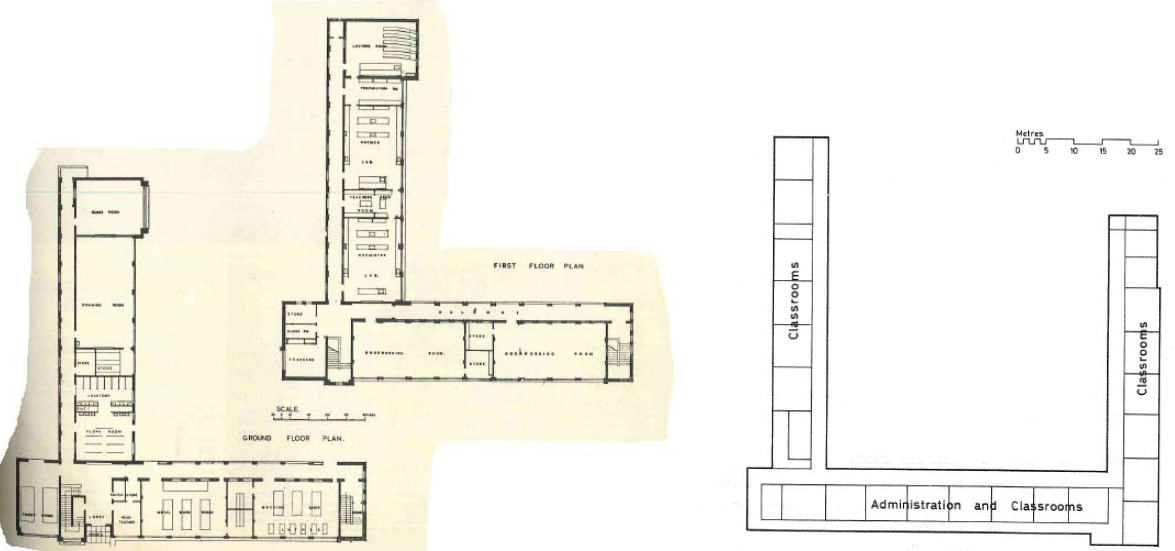


FIGURE 9: QUADRANGLE DESIGN: YOKINE PRIMARY SCHOOL, WESTERN AUSTRALIA (1959)

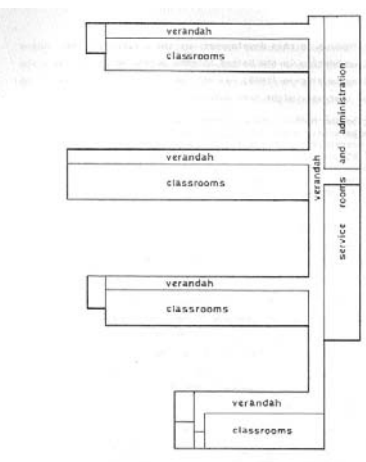
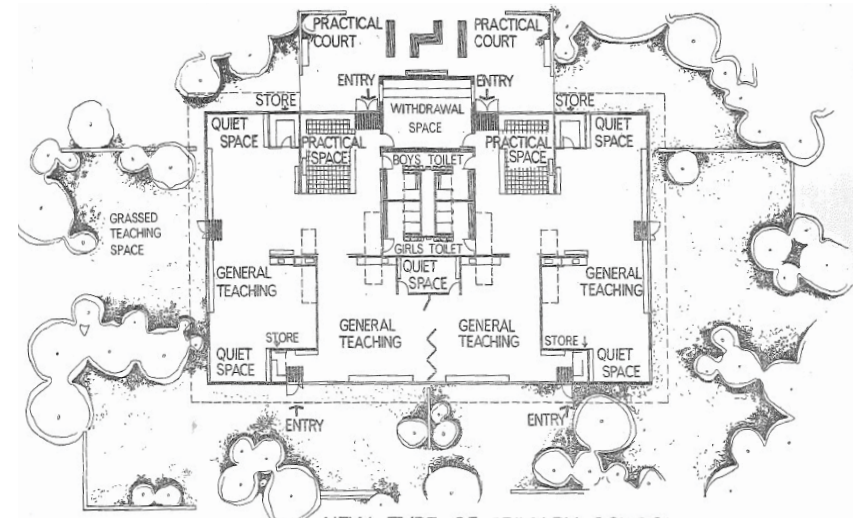


FIGURE 10: FINGER PLAN DESIGN: BALCATTa PRIMARY SCHOOL, WESTERN AUSTRALIA (1964)



NEW TYPE OF PRIMARY SCHOOL

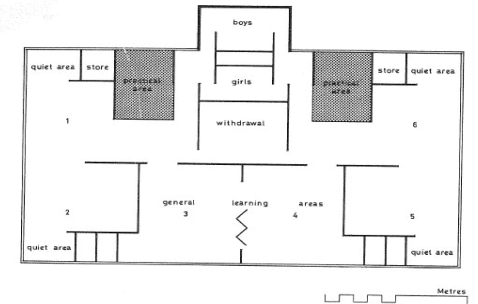
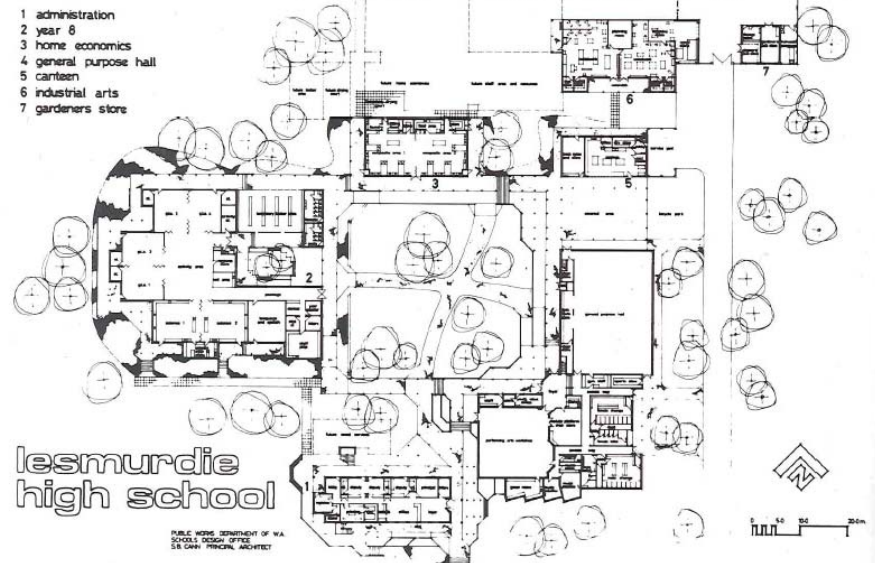
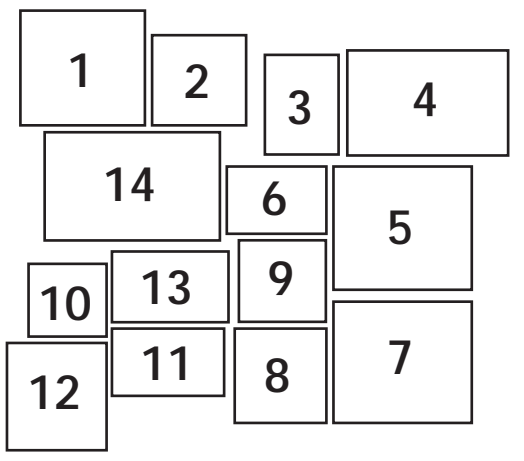
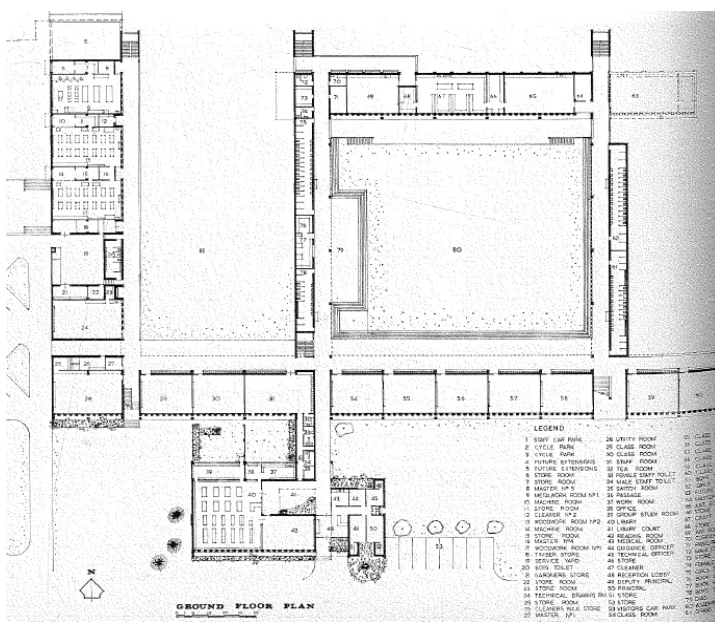
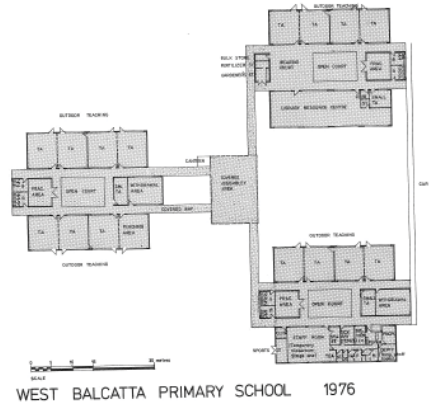
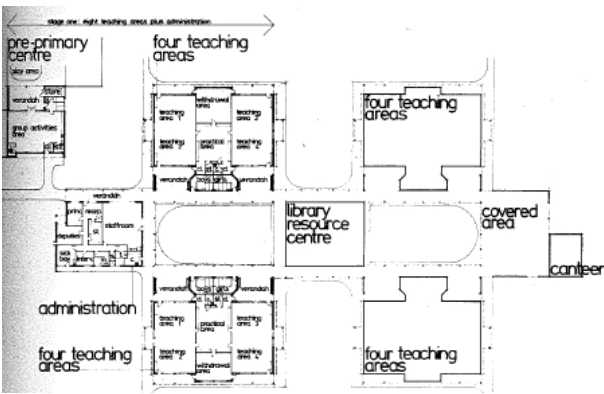


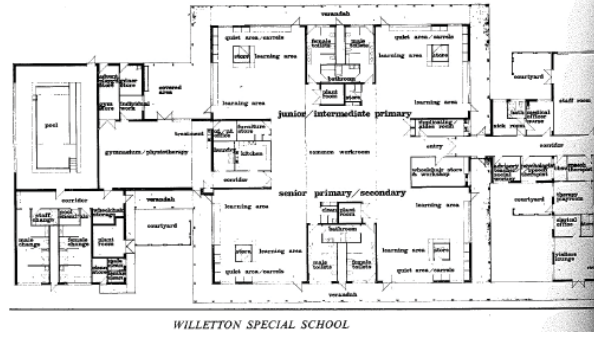
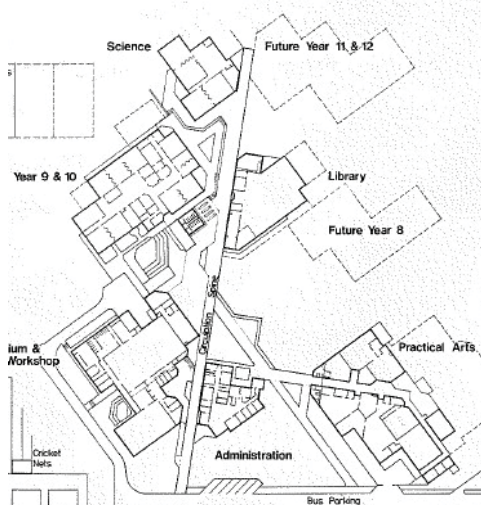
FIGURE 14: SIX-TEACHER UNIT: BATEMAN PRIMARY SCHOOL, WESTERN AUSTRALIA (1970)



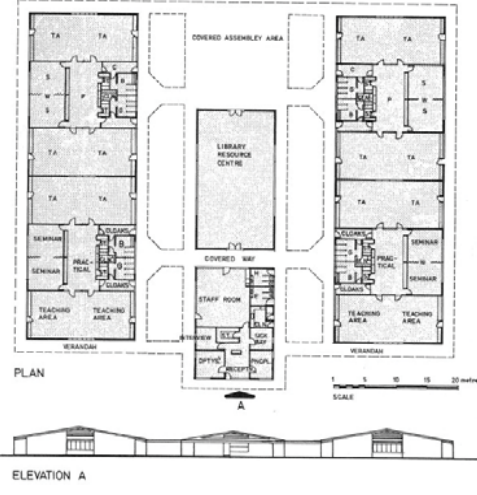
GROUND FLOOR PLAN



WEST BALCATTa PRIMARY SCHOOL 1976



WILLETTON SPECIAL SCHOOL



PLAN

ELEVATION A

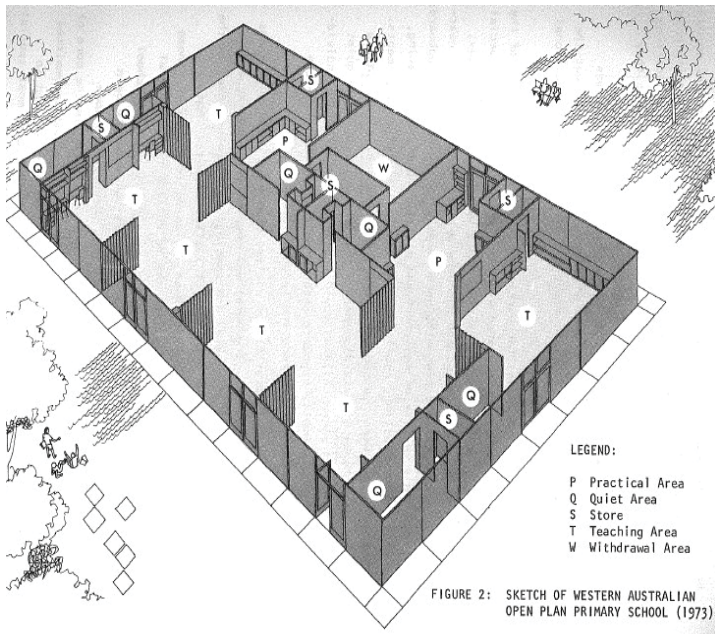
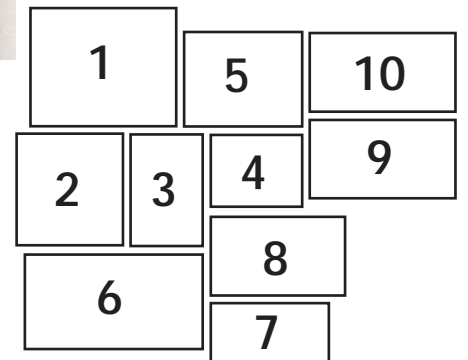
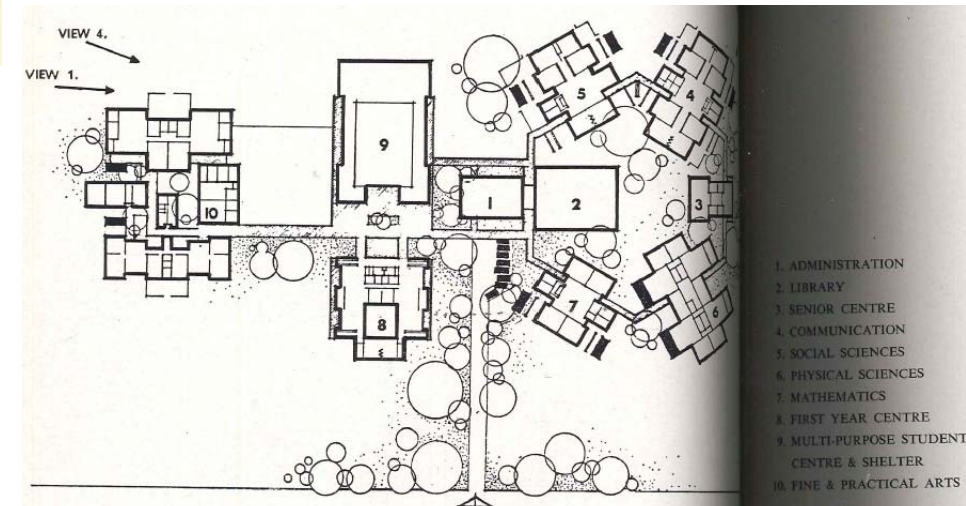
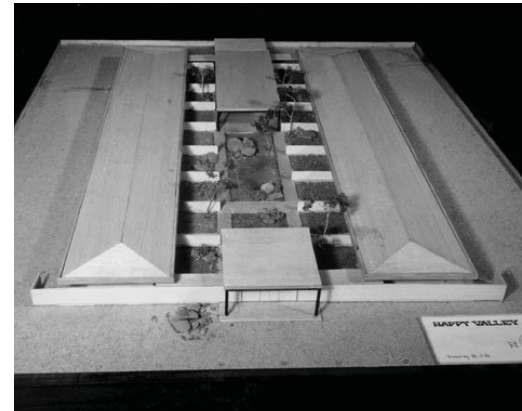
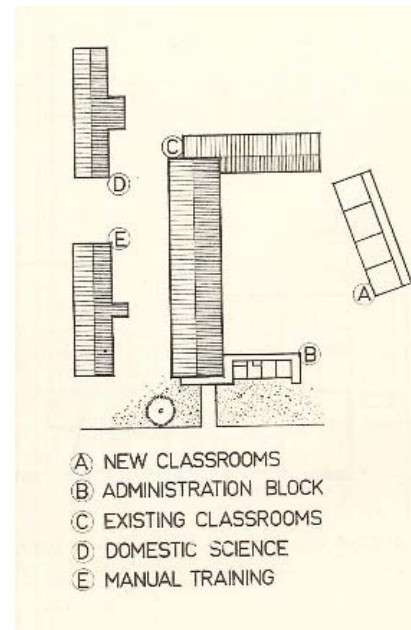
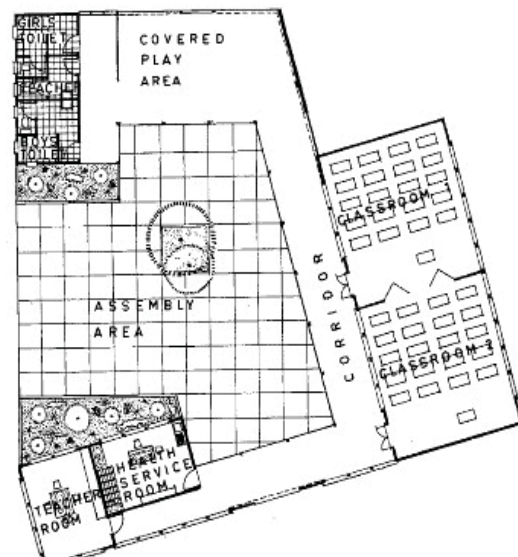
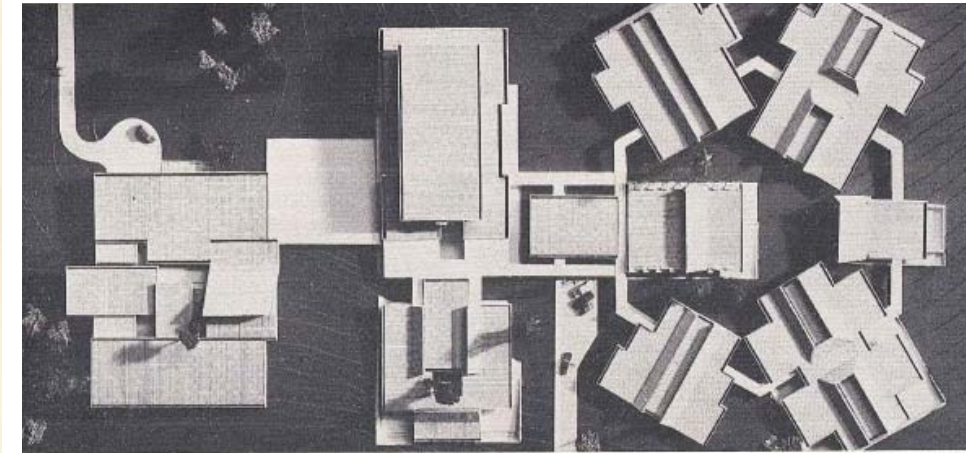
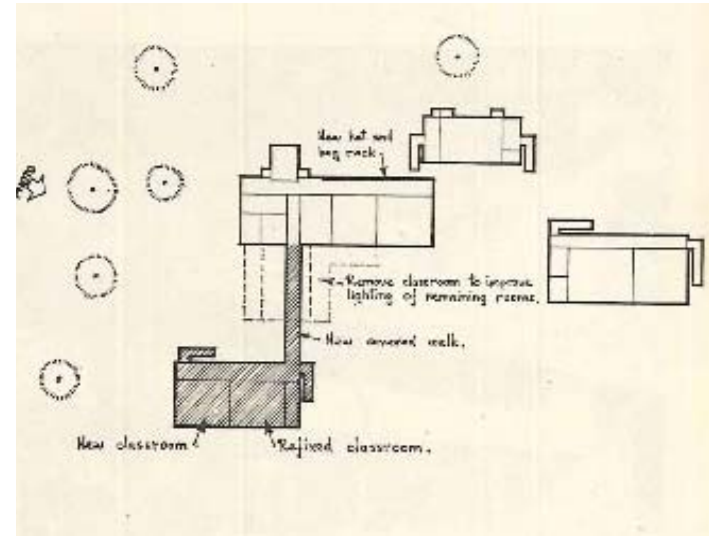
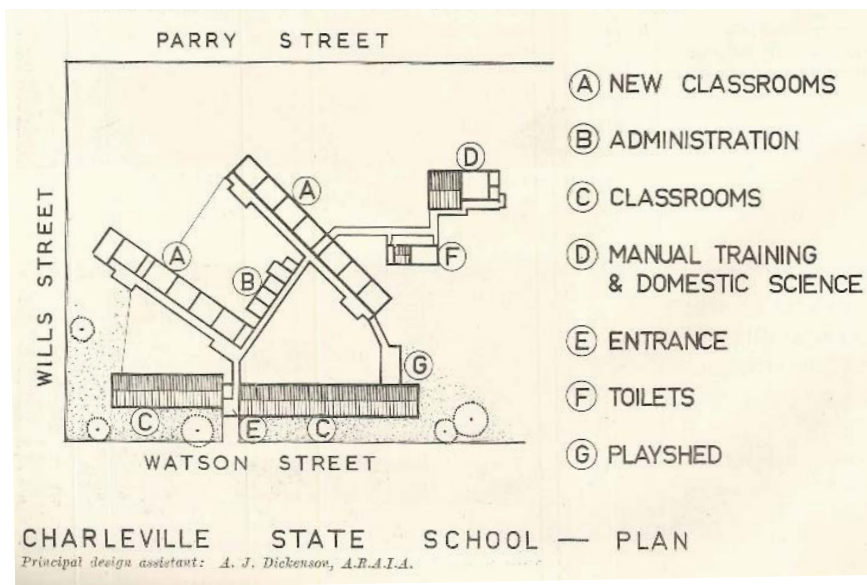


FIGURE 2: SKETCH OF WESTERN AUSTRALIAN OPEN PLAN PRIMARY SCHOOL (1973)

- 1 - Perth High School, 1950
  - 2 - Quadrangle Design, Yokine Primary School, 1959
  - 3 - Finger Plan Design, Balcatta Primary School, 1964
  - 4 - Design for a New Type of Primary School, 1978
  - 5 - Kewdale High School, 1969
  - 6 - Six-Teacher Unit, Bateman Primary School, 1970
  - 7- Open Play Primary School, 1973
  - 8 - Huntingdale Primary School, 1976
  - 9 - West Balcatta Primary School, 1976
  - 10 - West Balcatta Primary School, 1976
  - 11 -Willetton Special School, 1977
  - 12 -Mandurah High School, 1978
  - 13 - Primary School Type, 1978
  - 14 - Lesmurdie High School, 1980
- (refer page 7 for image credits)



# School Plans: QUEENSLAND



Wondai State School—Typical "Open Plan" Concept

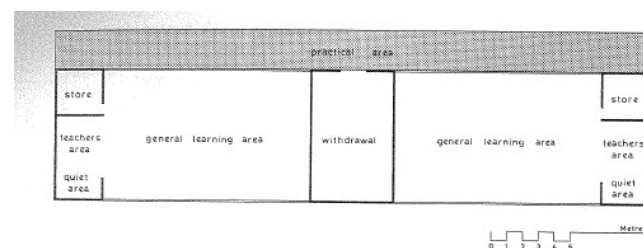
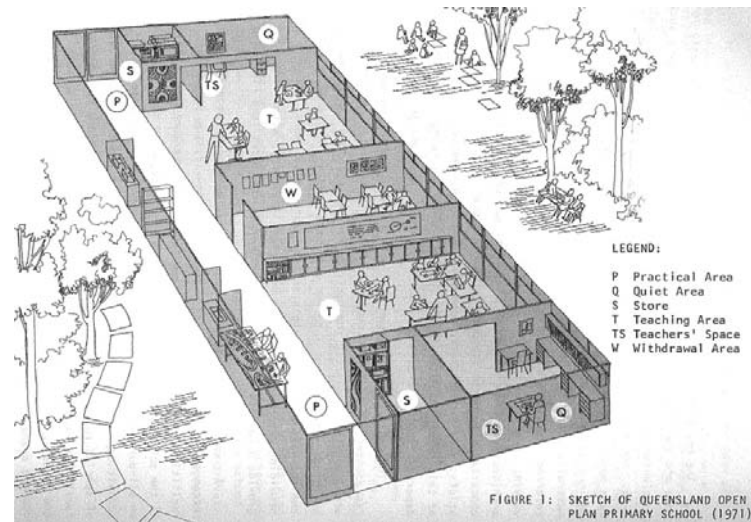
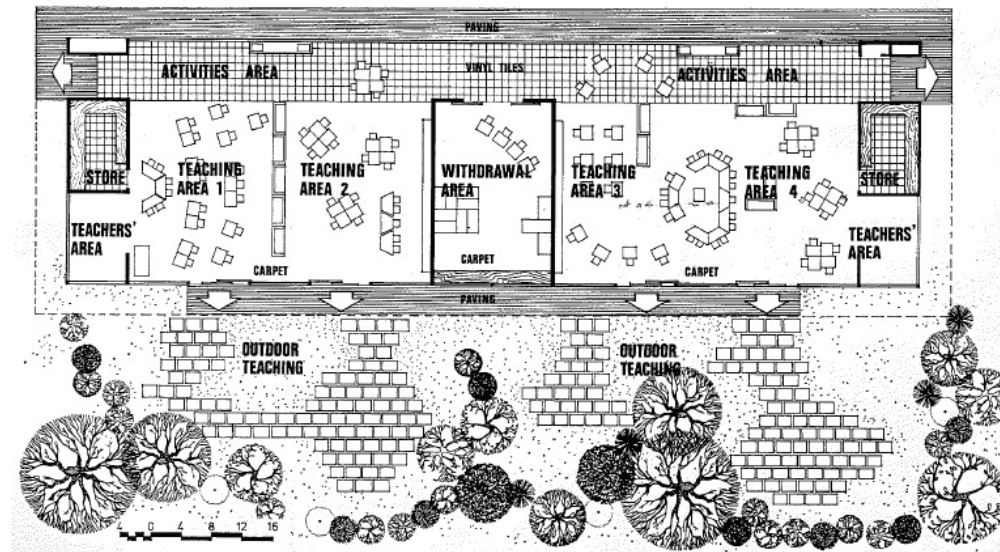
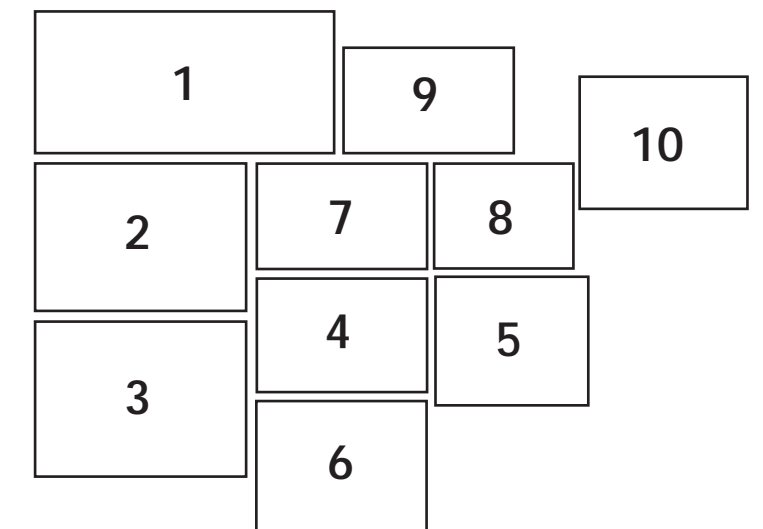
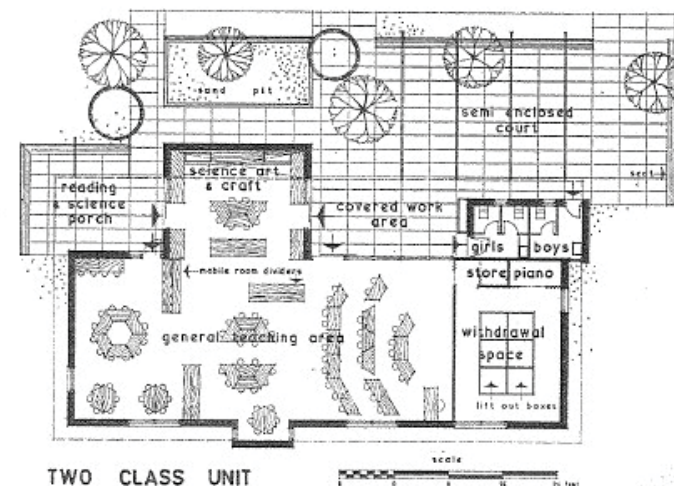
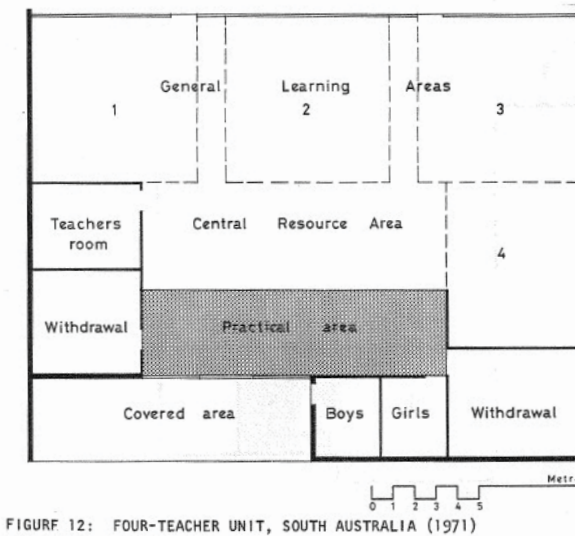
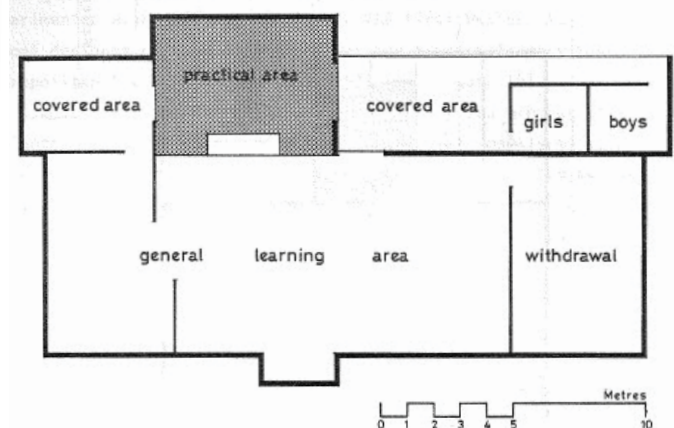
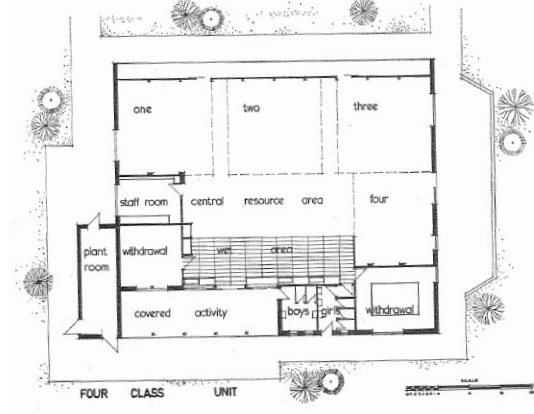
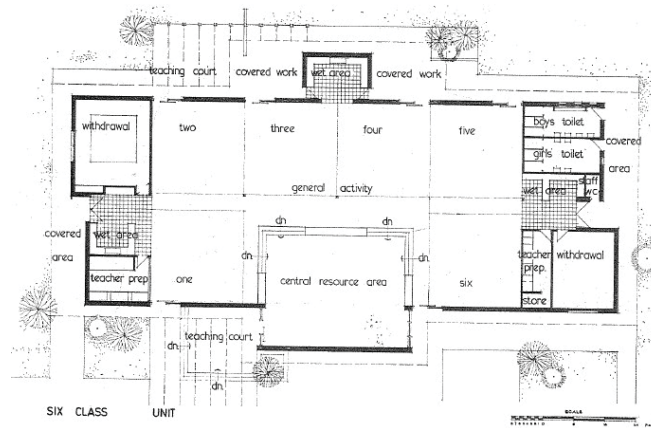
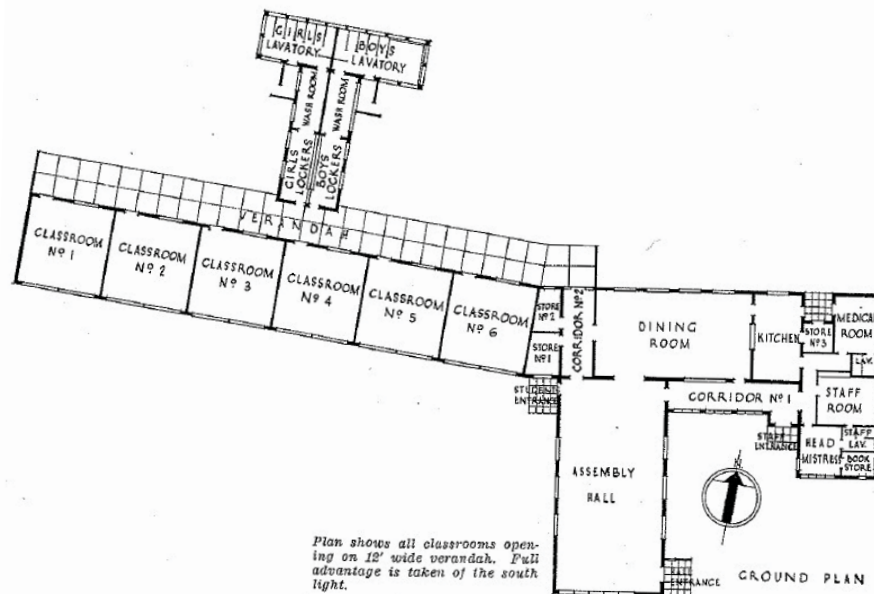
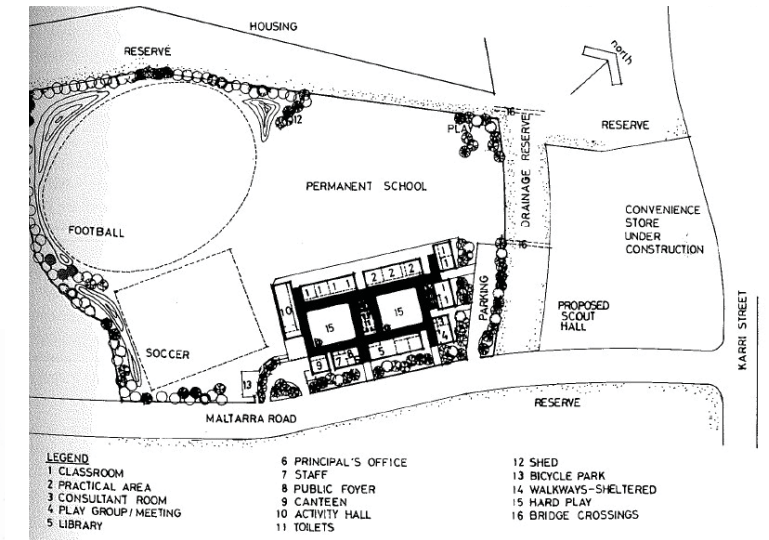
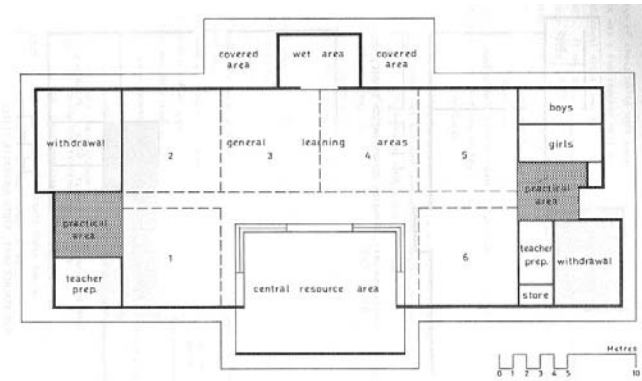
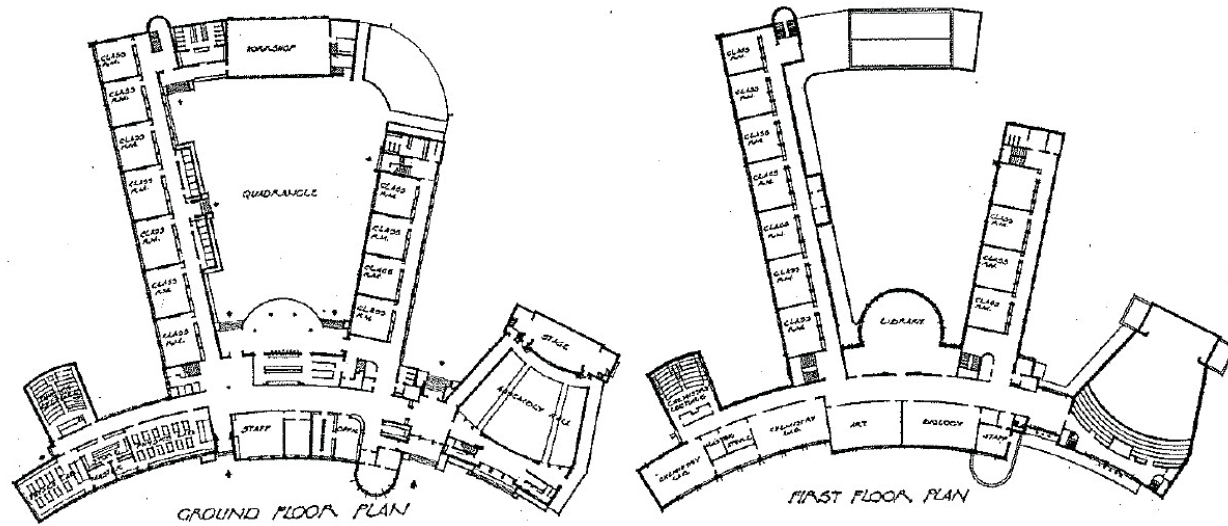


FIGURE 16: MULTIPLE-AREA UNIT: NORVILLE PRIMARY SCHOOL, QUEENSLAND (1971)

- 1 - Charleville State School, 1957
  - 2 - Darling Point Opportunity School, 1958
  - 3 - Gympie High School, 1957
  - 4 - Happy Valley School, 1964
  - 5 - Laidley North Primary School, 1960
  - 6 - Wondai State School, Open Plan Type, 1972
  - 7 - Norville Primary School, Multi-Area Unit, 1971
  - 8 - Queensland Open Plan Primary School, 1971
  - 9 - Craigslea High School, 1973
  - 10 - Craigslea High School, 1973
- (refer page 7 for image credits)



# School Plans: SOUTH AUSTRALIA



- 1 - Adelaide Boys High School, 1952
  - 2 - Brompton Primary School, 1951
  - 3 - Burnside Experimental Unit, 1968
  - 4 - Burnside Demonstration School, Two-teacher Unit, 1969
  - 5 - Four-Teacher Unit, 1971
  - 6 - Cowandilla School, 1971
  - 7 - Cowandilla School, 1971
  - 8 - Cowandilla School, 1971
  - 9 - Six-teacher Unit, 1972
  - 10 - Munno Para Primary School. 1978
- (refer page 7 for image credits)



# School Plans: NEW SOUTH WALES

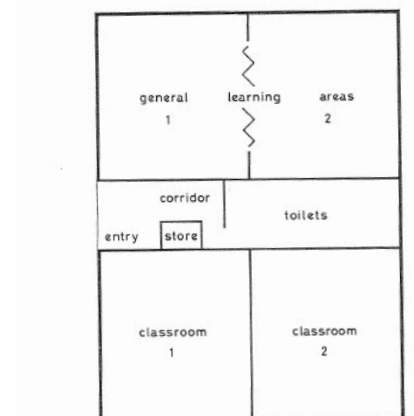
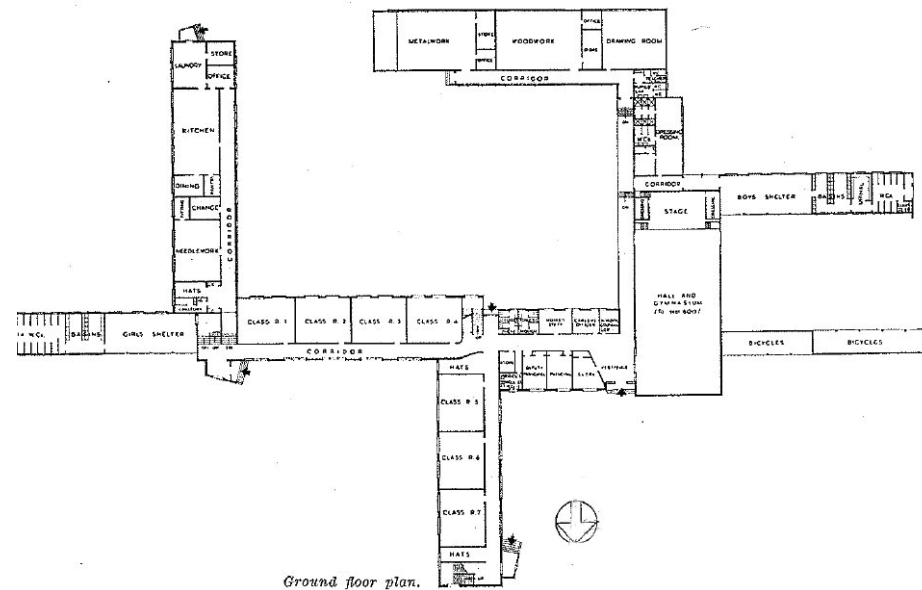
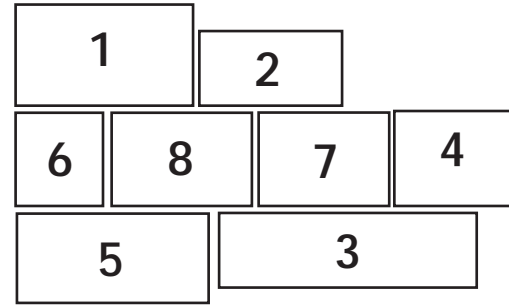
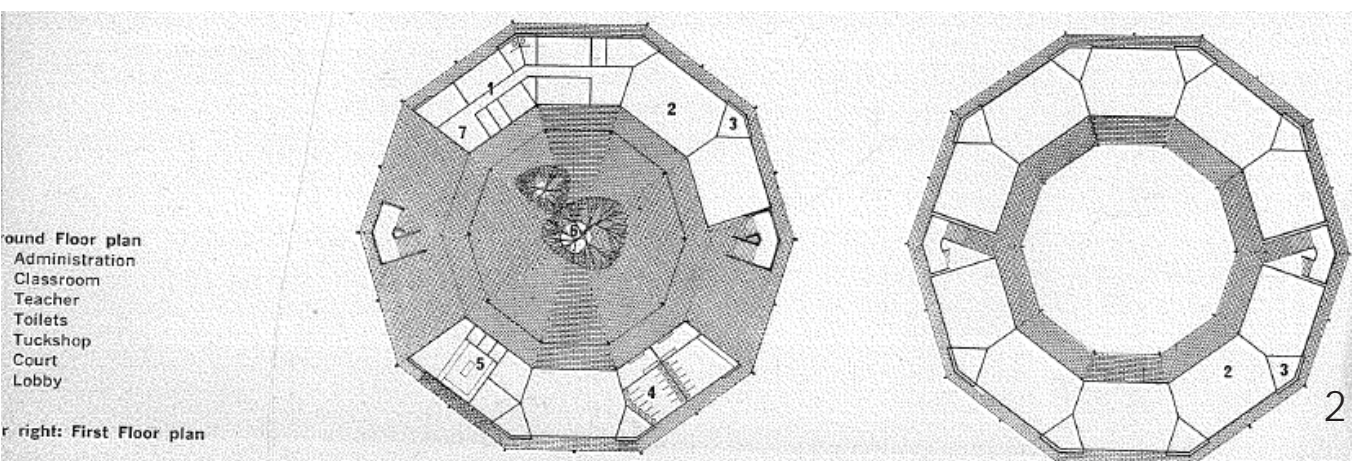
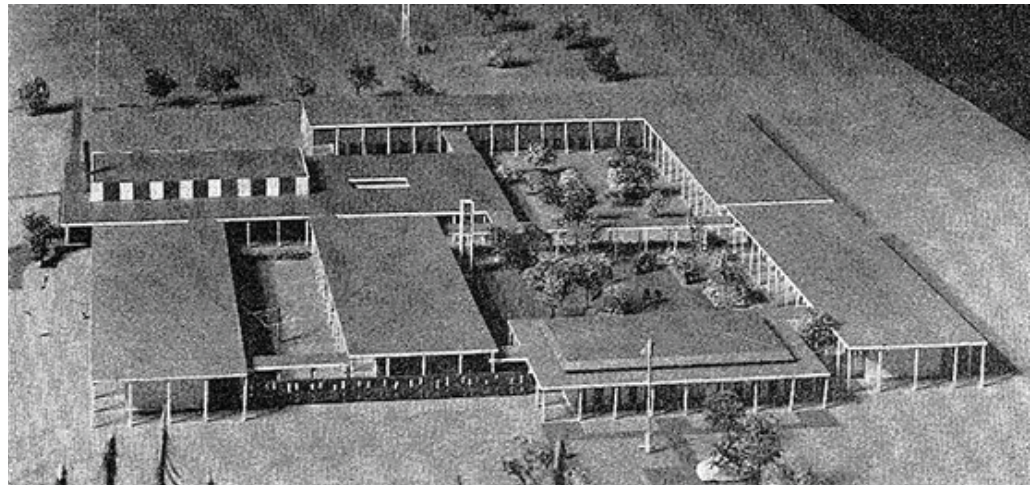
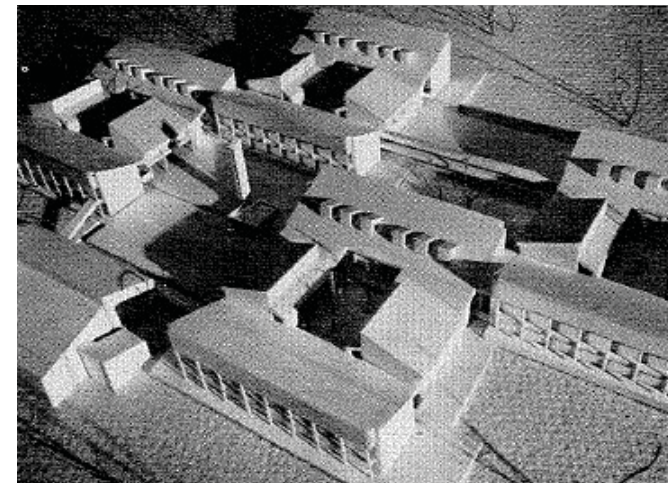
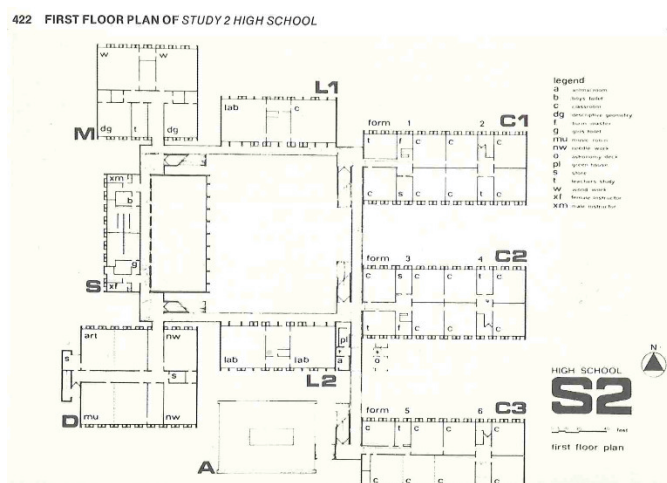


FIGURE 21: UNIT OF MIXED ARCHITECTURAL DESIGN: NEW SOUTH WALES (1968)



- 1- Penrith High School, 1951
  - 2 - Turramurra High School, 1965
  - 3 - Belmont High School, 1965
  - 4 -Ryde High School, 1965
  - 5 - Condobolin High School, 1966
  - 6 - Tregear Primary School, Unit of Mixed Architectural Design, 1968
  - 7 - Study High School, 1969
  - 8 - Cromer High School, 1977
- (refer page 7 for image credits)



School Plans: VICTORIA

- 1 - **St Josephs School (Springvale), 1954**  
*Architecture Australia*, April-June 1954, p. 102 (plan reproduced courtesy of Smith Tracey Architects). Architect: Smith, Tracey, Lyon and Brock
- 2 - **Lakeside High School, 1961-62**  
Reproduced with permission from the “Pictures Collection, State Library of Victoria” (identifier: Accession no(s) H2006.165/225 )  
Architect: unknown; Photographer: Laurie Burchell
- 3 - **Courtyard High School, 1967**  
Parliamentary Papers: Report of the Council of Public Education, Victoria Government, 1966-67, p 28.  
Architect: unknown; Photographer: unknown
- 4 - **Kew High School, 1965**  
*Architecture Australia*, September 1964, p. 94  
Architect: Victoria Government Architect.
- 5 - **Downer Primary School (ACT), 1964**  
*Architecture Australia*, vol. 53, no. 2, June 1964, p. 101-104.  
Architect: Mockridge, Stahle and Mitchell
- 6 - **Four-Teacher Unit, North Fitzroy Primary School, 1972**  
Published in: *Development of Open Plan Primary School Building Design in Australia* (Education Department of Western Australia, 1976).  
Architect: unknown
- 7 - **Four-Teacher Unit, Weetangera Primary School (ACT), 1976**  
Published in: *Development of Open Plan Primary School Building Design in Australia* (Education Department of Western Australia, 1976).  
Architect: unknown
- 8 - **Queenscliff High School, 1980**  
*Architecture Australia*, vol. 69, no. 5, 1980, p. 55  
Architect: Vic. Public Works Department, project architect: John Douglass
- 9 - **Queenscliff High School, 1980**  
*Architecture Australia*, vol. 69, no. 5, 1980, p. 55  
Architect: Vic. Public Works Department, project architect: John Douglass

School Plans: SOUTH AUSTRALIA

- 1 - **Adelaide Boys High School, 1952**  
*Architecture*, July-Sept 1952, p. 88-90 (plan reproduced courtesy of John R Brogan and Associates).  
Architect: Edward B Fitzgerald and John R Brogan in Assoc.
- 2 - **Brompton Primary School, 1951**  
*Australia*, July-Sept 1951, p. 80-81  
Architect: South Australia Government Architect.
- 3 - **Burnside Experimental Unit, 1968**  
Parliamentary Papers: Report of the Minister of Education, South Australia Government, 1968, p 18. Architect: unknown.
- 4 - **Burnside Demonstration School, Two-teacher Unit, 1969**  
Published in: *Development of Open Plan Primary School Building Design in Australia* (Education Department of Western Australia, 1976).  
Architect: unknown.
- 5 - **Four-teacher Unit, 1971**  
Published in: *Development of Open Plan Primary School Building Design in Australia* (Education Department of Western Australia, 1976).  
Architect: unknown.
- 6 - **Cowandilla School, 1971**  
*Architecture Australia*, vol. 60, no. 3, June 1971, p. 450-451.  
Architect: South Australia Government Architect.
- 7 - **Cowandilla School, 1971**  
*Architecture Australia*, vol. 60, no. 3, June 1971, p. 450-451.  
Architect: South Australia Government Architect.
- 8 - **Cowandilla School, 1971**  
*Architecture Australia*, vol. 60, no. 3, June 1971, p. 450-451.  
Architect: South Australia Government Architect.
- 9 - **Six-teacher Unit, 1971**  
Published in: *Development of Open Plan Primary School Building Design in Australia* (Education Department of Western Australia, 1976).  
Architect: unknown.
- 10 - **Munno Para Primary School, 1978**  
Parliamentary Papers: Report of the Minister of Education, South Australia Government, 1978, p 31. Architect: unknown.

School Plans: QUEENSLAND

- 1 - **Charleville State School, 1957**  
Parliamentary Papers: Department of Public Works, Queensland Government, 1958-59, unpaginated. Architect: A.J. Dickenson
- 2 - **Darling Point Opportunity School, 1958**  
Parliamentary Papers: Department of Public Works, Queensland Government, 1958-59, unpaginated. Architect: unknown.
- 3 - **Gympie High School, 1957**  
Parliamentary Papers: Report of the Department of Public Works, Queensland State Government, 1957-1958. Architect: unknown.
- 4 - **Happy Valley School, 1964**  
Queensland State Archives (reference no. 17082)  
Architect: unknown; Photographer: Lands Department, Queensland Govt.
- 5 - **Laidley North Primary School, 1960**  
Parliamentary Papers: Report of the Department of Public Works, Queensland State Government, 1960. Architect: F. H. Mitchell.
- 6 - **Wondai State School, Open Plan Type, 1972**  
Parliamentary Papers: Report of the Department of Public Works, Queensland State Government, 1972. Architect: unknown.
- 7 - **Norville Primary School. Multi-Area Unit, 1971**  
Published in: *Development of Open Plan Primary School Building Design in Australia* (Education Department of Western Australia, 1976).  
Architect: unknown.
- 8 - **Queensland Open Plan Primary School, 1971**  
Published in: *Development of Open Plan Primary School Building Design in Australia* (Education Department of Western Australia, 1976).  
Architect: unknown.
- 9 - **Craigslea High School, 1973**  
Parliamentary Papers: Annual Report of the Queensland Department of Education, 1973, p. 573. Architect: unknown.
- 10 - **Craigslea High School, 1973**  
Parliamentary Papers: Annual Report of the Queensland Department of Education, 1973, p. 573.  
Architect: unknown; Photographer: unknown.

School Plans: NEW SOUTH WALES

- 1 - **Penrith High School, 1951**  
*Australia*, July-Sept 1951, p. 78-79  
Architect: NSW Government Architect.
- 2 - **Turrumurra High School, 1965, NSW**  
Published in: Jan Burnswoods and Jim Fletcher (eds), *Sydney and the Bush: A Pictorial History of Education in New South Wales* (NSW Department of Education, 1980).  
Architect: unknown; Photographer: unknown.
- 3 - **Belmont High School, 1965**  
*Architecture Australia*, vol. 54, no. 3, September 1965 p. 82.  
Architect: Michael Dysart, New South Wales Government Architect.
- 4 - **Ryde High School, 1965**  
*Architecture Australia*, vol. 54, no. 3, September 1965 p. 83.  
Architect: Michael Dysart, New South Wales Government Architect; Photographer: Max Dupain
- 5 - **Condobolin High School, 1966**  
Parliamentary Papers: Loan Speech by the Hon. R.W. Askin (Premier to the Treasurer), New South Wales Government, 1966, p 7. Architect: unknown.
- 6 - **Tregear Primary School, Unit of Mixed Architectural Design, 1968**  
*Development of Open Plan Primary School Building Design in Australia* (Education Department of Western Australia, 1976).  
Architect: unknown.
- 7 - **Study High School, 1969**  
Published in: Jan Burnswoods and Jim Fletcher (eds), *Sydney and the Bush: A Pictorial History of Education in New South Wales* (NSW Department of Education, 1980). Architect: unknown.
- 8 - **Cromer High School, 1977**  
Published in: Jan Burnswoods and Jim Fletcher (eds), *Sydney and the Bush: A Pictorial History of Education in New South Wales* (NSW Department of Education, 1980).  
Architect: unknown; Photographer: unknown.

Image Credits

School Plans: WESTERN AUSTRALIA

- 1 - **Perth High School, 1950**  
*Architecture*, April 1950, p. 70-71.  
Architect: Western Australia Government Architect in assoc. with Finn, Van Mens and Maidment.
- 2 - **Quadrangle Design, Yokine Primary School, 1959**  
Published in: *Development of Open Plan Primary School Building Design in Australia* (Education Department of Western Australia, 1976).  
Architect: unknown.
- 3 - **Finger Plan Design, Balcatta Primary School, 1964**  
Published in: *Development of Open Plan Primary School Building Design in Australia* (Education Department of Western Australia, 1976).  
Architect: Department of Education, Western Australia
- 4 - **Design for a New Type of Primary School, 1978**  
Parliamentary Papers: Report of the Public Works Department, Western Australia, 1978, p. 39. Architect: unknown.
- 5 - **Kewdale High School, 1969**  
*Architecture Australia*, vol. 58, no. 4, Aug 1969, p.674 (plan reproduced courtesy of Cox Howlett & Bailey). Architect: Forbes and Fitzhardinge.
- 6 - **Six-Teacher Unit, Bateman Primary School 1970**  
Published in: *Development of Open Plan Primary School Building Design in Australia* (Education Department of Western Australia, 1976).  
Architect: unknown.
- 7 - **Open Play Primary School, 1973**  
Published in: *Development of Open Plan Primary School Building Design in Australia* (Education Department of Western Australia, 1976).  
Architect: unknown.
- 8 - **Huntingdale Primary School, 1976**  
Published in: *Primary Schools: Design Brief* (Education Department of Western Australia, 1976). Architect: unknown.
- 9 - **West Balcatta Primary School, 1976**  
Published in: *Primary Schools: Design Brief* (Education Department of Western Australia, 1976). Architect: unknown.
- 10 - **West Balcatta Primary School, 1976**  
Parliamentary Papers: Report of the Public Works Department, Western Australia, 1976, p. 41. Architect: unknown.
- 11 - **Willeton Special School. 1978**  
Parliamentary Papers: Report of the Public Works Department, Western Australia, 1977, p. 34. Architect: unknown.
- 12 - **Mandurah High School, 1978**  
*The Architect Western Australia*, vol. 78, no. 3, 1978, p. 8-11 (plan reproduced courtesy of Peter Hunt Architects). Architect: Peter Hunt.
- 13 - **Primary School Type, 1978**  
Parliamentary Papers: Annual Report, Public Works Department, Western Australia Government, 1978, p 39. Architect: unknown.
- 14 - **Lesmurdie High School, 1980**  
Parliamentary Papers: Report of the Public Works Department, Western Australia, 1980, 52. Architect: unknown.